

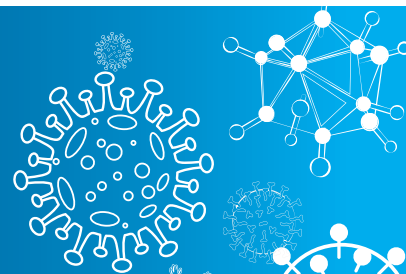
Diagnose with precision, treat with confidence

Automated molecular testing solutions for
clinically relevant infectious diseases

Discover the advantage of 3base[®] technology

- **Efficient pan-screening capabilities:** conversion of a 4 base sequence to 3base[®] increases sequence similarity to expand screening for a wide range of subtypes
- **Greater 'resilience' to genetic variation:** 3base[®] reduces the impact of both C>T and T>C mutations, the most frequently occurring mutation in single-stranded nucleic acids, such as viral genomes
- **More efficient multiplex assays:** a reduced G-C content, fewer primer requirements, less competition and expanded screening capabilities without compromising assay sensitivity or specificity

Diagnostic menu sample: Syndromic respiratory testing



Detection of over 20 leading respiratory bacterial, viral and fungal pathogens

- Surveillance and accurate diagnosis of co-circulating respiratory infections is essential to support appropriate and timely patient management, support hospital infection control and epidemiology studies.
- Genetic Signatures portfolio of multiplex real-time PCR assays provide simultaneous syndromic detection to rapidly screen for multiple respiratory diseases with shared signs and symptoms, in a single test.
- *EasyScreen™* assays use standardised processing conditions, enabling panel expansion across the respiratory range.

Respiratory pathogen targets	Respiratory Pathogen Detection Kit (RP007) CE-IVD/TGA	SARS-CoV-2 Detection Kit (RP012) CE-IVD/TGA	Extended Respiratory Detection Kit (RP017-Panels) RUO			Atypical Respiratory Pathogen Detection Kit (RP009A) RUO
			RP017E	RP017F	RP017G	
SARS-CoV-2 - M-gene		●				
SARS-CoV-2 - N-gene		●				
Influenza A	●					
Rhinovirus	●					
Influenza B	●					
Respiratory syncytial virus - A/B	●					
Human metapneumovirus	●					
Parainfluenza 1/3	●					
Parainfluenza 2	●					
Enterovirus	●					
Adenovirus	●					
<i>B. pertussis</i> / <i>B. parapertussis</i>	●					
<i>Mycoplasma pneumoniae</i>	●					
Coronavirus HKU-1			●			
Coronavirus OC43			●			
Coronavirus NL63/229E			●			
Parainfluenza 4					●	
<i>Bordetella pertussis</i>				●		
<i>Bordetella parapertussis</i>				●		
<i>Chlamydia pneumoniae</i>						●
<i>Streptococcus pneumoniae</i>						●
<i>Legionella pneumophila</i>						●
<i>Pneumocystis jirovecii</i>				●		

The detection kits can be run in combination to align with your laboratory requirements*

**Learn about our complete product
range and flexible, automated
end-to-end diagnostic workflow**

www.geneticsignatures.com

Europe, Middle East and Africa

E: EMEA@geneticsignatures.com

E: EMEAtechSupport@geneticsignatures.com

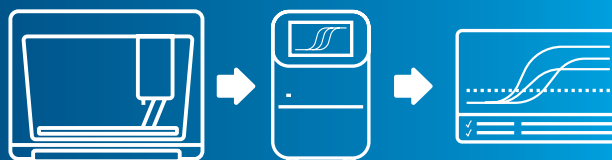
P: +44 330 828 0813 (English)

P: +49 32 22109 2834 (German)

Head Office (Australia)

E: info@geneticsignatures.com

P: +61 2 9870 7580



*Contact us for available detection kit combinations and for more information on our products and regulatory status in your region. When using our products always read the label and follow the directions for use.

Genetic Signatures Ltd. © 2025. All rights reserved.