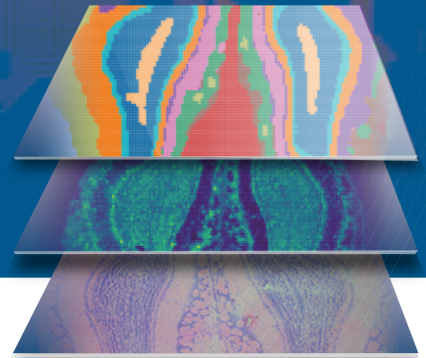


# Salus Spatial Transcriptomics Solution



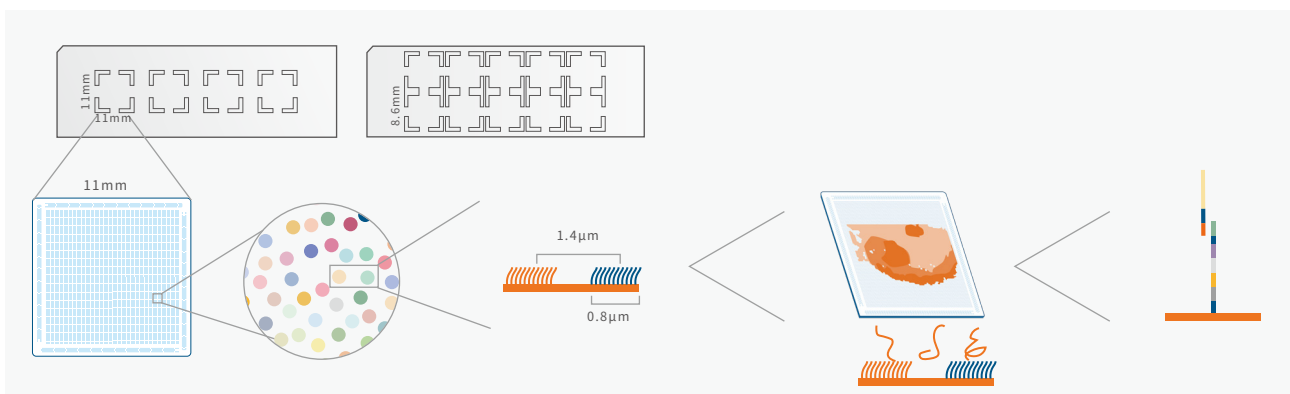
Salus Spatial Transcriptomics Solution (SalusSTS) is a powerful spatial genomics research tool, including ultra-high density spatial barcode probe chip, gene sequencer, tissue biochemistry analyzer, and data analysis toolkit.

SalusSTS can help researchers to accurately and efficiently obtain the expression information of tissue samples in spatial in situ at the subcellular resolution.



## Technology

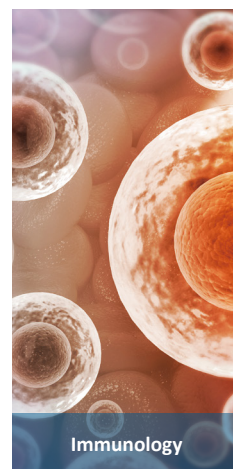
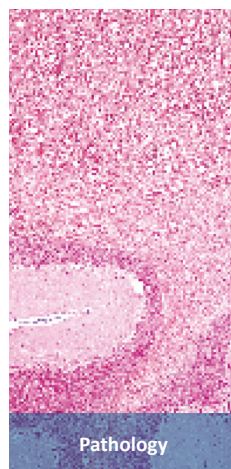
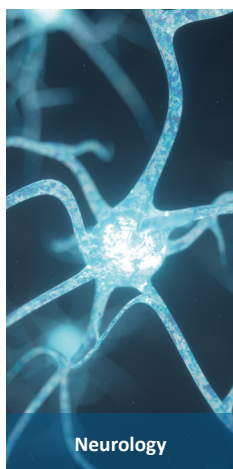
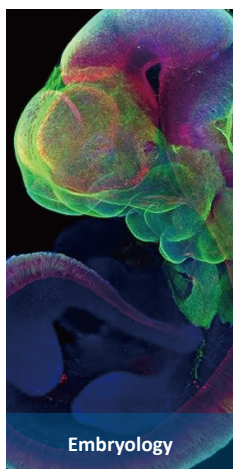
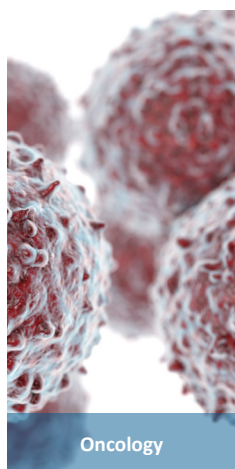
Spatial Transcriptomics (ST) Chip for mRNA capture and spatial localization at 1.4 $\mu$ m resolution



[illegible]

## Research Areas

Spatial transcriptomics technology enables researchers to gain insight into cell-cell interactions at molecular level, thereby promoting new biological discoveries. It can be applied in tumor research, embryonic tissue development, neurobiology, pathology research, immunological research and other emerging fields.



## Ordering Information

Products	Unit	Catalog No.
SalusSTS Gene Expression Set, 8.6 mm	10rxns	SL-S00179
SalusSTS Gene Expression Set, 11 mm	4rxns	SL-S00231
SalusSTS Tissue Optimization Set	10rxns	SL-S00176
SalusSTS cryostat microtome	EA	SL-R00102
SalusSTS spatial transcriptome analysis tool	EA	SL-R00103
SalusSTS tissue biochemical workstation	EA	SL-R00104
SalusSTS Cassette, 8.6 mm	EA	SL-S00182
SalusSTS Cassette, 11 mm	EA	SL-S00186
PCR device adapter	EA	SL-M00105

## After-sales service

Salus biomed or Salus biomed's authorised partners provide after-sales service, including operation training and technical support.

# Salus Biomed

Empower and Cooperate

Salus Biomed was founded in October 2020, focusing on the development of high throughput genetic sequencing platform, and creating world's leading super-resolution spatial omics research platform. The company is committed to the independent development of genomics and spatial genomics products and the translation of research and clinical applications.



Assembly Line



Assembly Line



Enzyme Development



Office Area



Shenzhen Salus Biomed Co., Ltd.

+086-0755-2374 5832

info@salus-bio.com

www.salus-bio.com

For research use only